

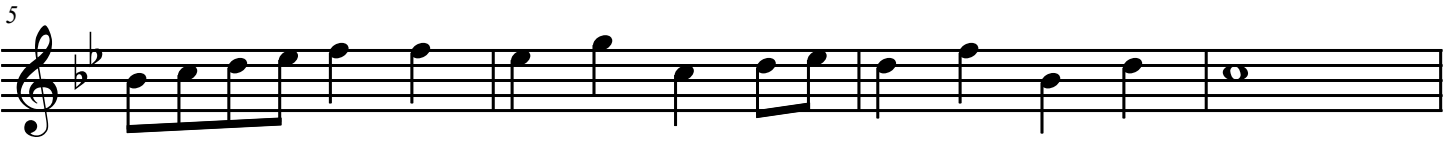
Trumpet 1

Let It Snow, Let It Snow, Let It Snow

M: Jule Styne, L: Sammy Cahn

INTRO

tr



A (A section, not a "Chorus")



B

29



Musical staff for section B, measures 29-32. The staff is in treble clef with a key signature of two flats (B-flat and E-flat). The melody consists of eighth and quarter notes.

33



Musical staff for section B, measures 33-36. The staff is in treble clef with a key signature of two flats. The melody continues with eighth and quarter notes.

C

37



Musical staff for section C, measures 37-40. The staff is in treble clef with a key signature of two flats. The melody continues with eighth and quarter notes.

41



Musical staff for section C, measures 41-44. The staff is in treble clef with a key signature of two flats. The melody continues with eighth and quarter notes.


(Bridge)

45



Musical staff for the bridge, measures 45-48. The staff is in treble clef with a key signature of two flats. The melody continues with eighth and quarter notes.

49



Musical staff for the bridge, measures 49-52. The staff is in treble clef with a key signature of two flats. The melody continues with eighth and quarter notes.

(last A section with tag)

53



Musical staff for the last A section with tag, measures 53-56. The staff is in treble clef with a key signature of two flats. The melody continues with eighth and quarter notes.

57



Musical staff for the last A section with tag, measures 57-60. The staff is in treble clef with a key signature of two flats. The melody continues with eighth and quarter notes.

61



Musical staff for the last A section with tag, measures 61-64. The staff is in treble clef with a key signature of two flats. The melody continues with eighth and quarter notes, ending with a long note.